

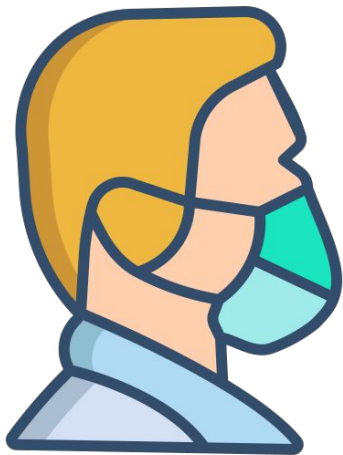


Mountain Lakes School District

Superintendent/Assistant Superintendent Update
Monday, November 2, 2020

Covid Update





MLSD Covid Cases

- Uptick in COVID activity is affecting some of our families (2 cases).
 - Local DOH has been an invaluable resource to our nurses and admins.
 - Regular collaboration to review protocols to ensure a consistency of approach across all schools.
 - Complex when we're dealing with a "contact" of a "[close contact](#)," so we will continue working closely with the DOH to properly handle each case.
-

MLHS Construction Update





Bathroom Finishes



Oct 30 2020 1:



Classroom Floor Installation



Oct 29 2020 04

Seamless Roof Installation



Second Marking Period Remote Learning Survey





2nd Marking Period: Remote Learning Survey

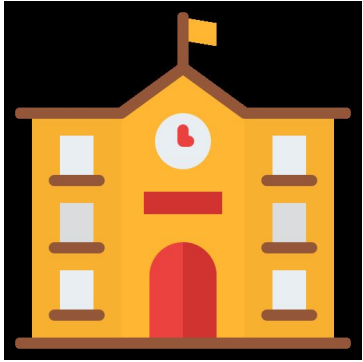
- Second Marking Period requests
 - Wildwood: In-person vs. Full Remote
 - Briarcliff/MLHS: Hybrid or Full Remote
 - Survey completed
-



	Marking Period One	Marking Period Two
Grade Level	# Full Time Virtual	# Full Time Virtual
Kindergarten	5	4
1st Grade	27	20
2nd Grade	11	11
3rd Grade	8	6
4th Grade	15	8
5th Grade	11	7
WW Subtotal	77	56
6th Grade	8	8
7th Grade	15	5
8th Grade	9	9
Briarcliff Subtotal	32	22
9th Grade	18	10
10th Grade	28	25
11th Grade	15	34
12th Grade	24	21
MLHS Subtotal	85	90
MLSD TOTAL	194	168

Schedules/ District Calendar Updates





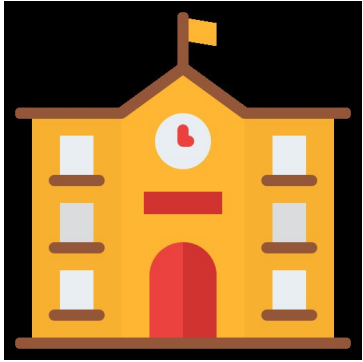
Building Schedules

Full Remote Schedules - Election Day

[MLHS](#)

[Briarcliff](#)

Wildwood/Lake Drive



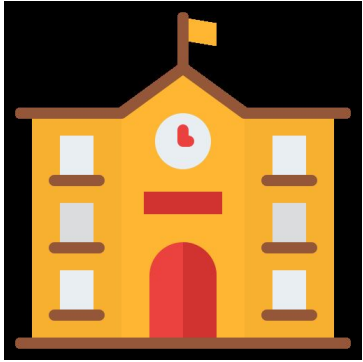
Building Schedules

½ Day Schedules

Wildwood/Lake Drive/Briarcliff

- Follow current schedule without PM virtual learning

[High School](#)



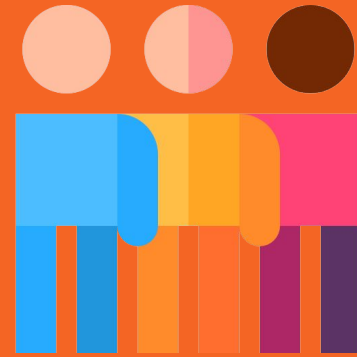
Cohort Alignment Reminder

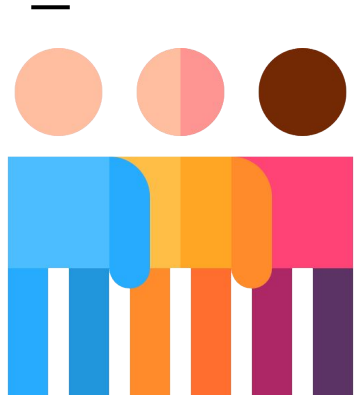
[Cohort Group Dates](#) are in alignment between Briarcliff and MLHS.

Unplanned closures will NOT result in a change in the cohort calendar.

Cohort calendars will be issued on a monthly basis to ensure an equitable number of days for each group.

Professional Development





Bi-Monthly $\frac{1}{2}$ Day Professional Development

- *2nd Wednesday of every other month*
 - Wednesday, November 11th
 - Wednesday, January 13th
 - Wednesday, March 10th
 - Wednesday, May 12th

November 11th PD (Proposed Work)

- *IXL Training (K - 12/ELA - Math)*
- *IDE coaching and lesson design (Briarcliff)*
- *In-house Turn Key Sessions*
 - *Lake Drive:*
 - *Virtual Teaching Reflections from Election Day*
 - *Google Classroom*
 - *High School:*
 - *Best Practices in Assessment*
 - *Canvas*



Updates/ Reminders





Tuition Student Advertising Update

- Advertise in the Parsippany Focus and Morris Focus who both have digital publications and have 10,000+ followers in Morris County.
 - www.parsippanyfocus.com
 - www.morrisfocus.com
 - Submit an editorial to the Parsippany Focus Magazine for print publication.
 - Working with Morris Sussex Sports (large social media presence) and many online avenues that would reach families all over Morris.
 - www.morrissussexsports.com
 - Posting notices on our website as well as our District Facebook page.
-



Superintendent Coffee Talks Reminder

December 17th, 2020 - 9:00 am

February 24th, 2021 - 12:00 pm

April 21st, 2021 - 9:00 am

LOCATION: Virtual Setting
